

## Tundra

**Tundra** is a habitat that is too cold for trees to grow. You can find tundra in Alaska and other places far north



Tundra in Fall.



Tundra in Spring.

Here are some animals that live in **tundra**.



Polar Bear



Caribou



Arctic Hare



Snowy Owl

## Desert

**Desert** is a habitat that has very little precipitation and extreme temperatures. You can find deserts in the south west United States and many other places in the world.



Mojave Desert, California



Sonoran Desert, Arizona

Here are some animals that live in the **desert**.



Black-tailed Jackrabbit



Desert Big Horn Sheep



Coyote



Desert tortoises



# Wetlands

**Wetland** is a habitat that has land covered in shallow water. This water can either be there all the time or only certain times of the year. You can find wetlands in many different places though out the world, including coastal and inland areas.

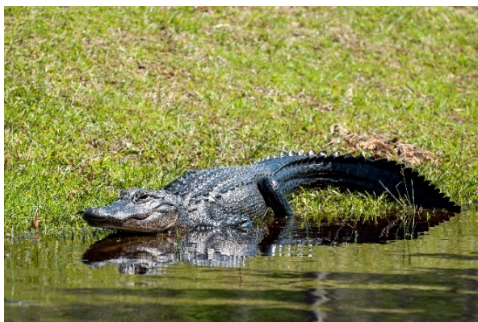


Costal Wetland in Louisiana



Inland Wetland (Peat bog)

Here are some animals that live in the **wetlands**.



American Alligator



North American Beaver



Great Blue Heron



Red-eared slider



## Lakes

**Lakes** are habitats that are full of water and surrounded by land. Lake can be big or small, freshwater or saltwater, and often are connected to the ocean by rivers and streams.

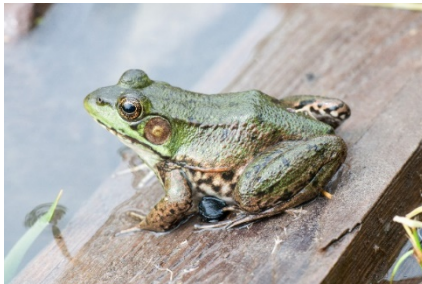


Lake in Jasper, Alberta, Canada



Aerial view of small lake

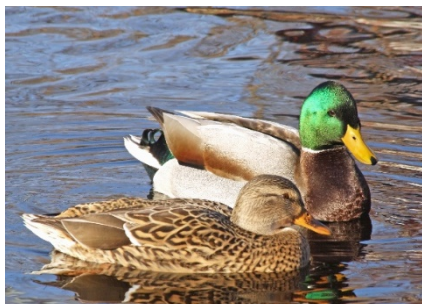
Here are some animals that live in **lakes**.



Bullfrog



Common Loon



Mallard ducks



Muskrat

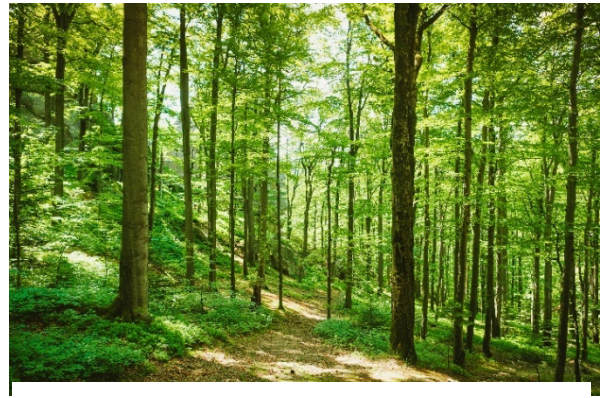


# Forest

**Forest** is a area of land covered in trees and other types of plants. There are many kinds of forest. They are named for the climate conditions and type of trees and plant that grow there



Forest in Winter.



Forest in Summer.

Here are some animals that live in the **forest**.



White Tail Deer



Grey Squirrel



Black-capped chickadee



Copperhead Snake



## Prairie

**Prairies** are made up of mostly grasses and grasslike plants. They don't have many trees or shrubs. Many prairies are adapted for dry, windy and hot climates.

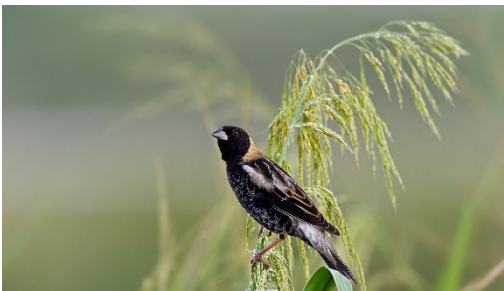


Tallgrass Prairie



Grassland Prairie

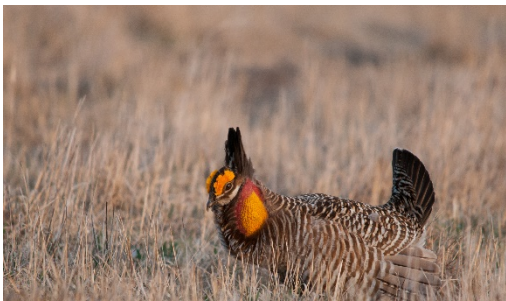
Here are some animals that live in the **prairie**.



Bobolink



American badger



Greater Prairie Chicken



Coyote

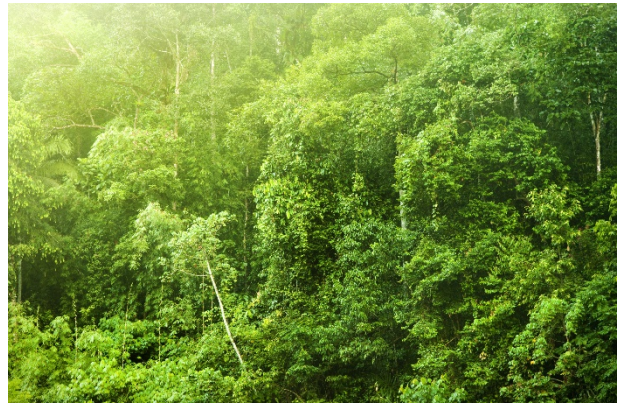


# Rainforest

**Rainforest** are very dense forest that are often hot, humid and have a lot of rainfall. Many of the world's rainforests are located near the equator.

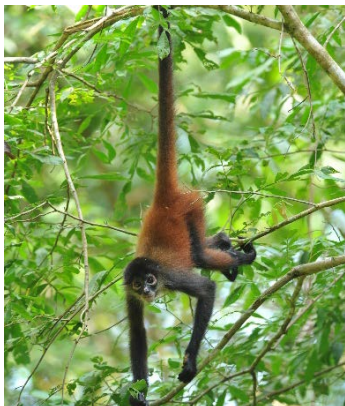


Rainforest, Central America



Tropical Rainforest, Malaysia

Here are some animals that live in the **rainforest**.



Spider Monkey



Toucan



Jaguar



Green tree boa



## Oceans

**Oceans** are large bodies of salty water. Oceans can be found all over the world from the coldest to the warmest places on earth.



Atlantic Ocean



Ice floe in ocean

Here are some animals that live in the **ocean**.



Green Sea Turtle



Reef Shark



Humpback Whale



Cuttlefish